

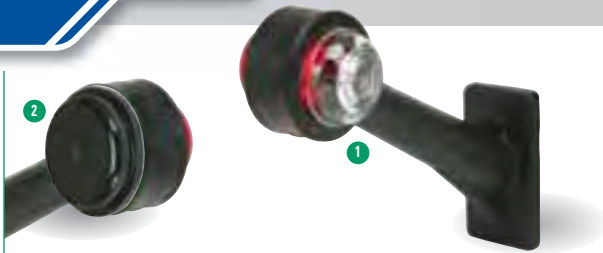
Lighting & Electrical

Cable & Wiring accessories • Lamps • Lighting kits



Contents	Page
Lamps: some of our most popular combination, position & fog lamps with spare bulbs & lenses	48
Cable & Wiring accessories, junction box & grommets, 7 pin plugs & sockets, complete lighting kits	49
Aspock lighting system: a system of plug-in combination lamps and the unique DC connector system	50
Aspock lighting system, More plug in lamp options and ready made wiring harnesses to connect them	51
Heavy duty battery, securing tray and a selection of wiring components for tipper, tilt-bed or electric winches	52
Lamps: some of our popular interior, numberplate, marker lamps and reflectors with spare bulbs & lenses	53

To Order – See pages 4 & 5 for distributor contact details or call direct on 0845 4082 505



1	P0657L	Outline marker lamp. Surface mounting stalk lamp with red and white lenses, LH commonly used on HB510 horsebox model.	£8.60
	P0657R	Outline marker lamp. Surface mounting stalk lamp with red and white lenses, RH commonly used on HB510 horsebox model.	£8.60
	P0657A	Outline marker lamp. Surface mounting stalk lamp with red and white lenses, fits either up or down hand. (GD/GP)	£8.60
	P0657B	Outline marker lamp. Surface mounting stalk lamp with red and white lenses, fits either up or down hand. (GD/GP)	£8.60
	P06571	Clear Lens. For front function of outline marker lamps (stalk type).	£1.30
	P06572	Red Lens. For rear function of outline marker lamps (stalk type).	£1.30
2	P0658	Black cover. For use where additional function is not required.	£1.75
	P0713	Bulb.	£0.70



3	P06770	Rear combination lamp. Rubber bodied 3 pod multifunction (Stop/Tail/Indicator/Fog) lamp with 4 metre cable coloured for RH function.	£35.85
	P06771	Rear combination lamp. Rubber bodied 3 pod multifunction (Stop/Tail/Indicator/Fog) lamp with 2.5 metre cable coloured for LH function.	£35.85
4	P06778	Rear combination lamp. Rubber bodied 2 pod multifunction (Stop/Tail/Indicator) lamp with 2 metre cable coloured for RH function.	£17.65
	P06779	Rear combination lamp. Rubber bodied 2 pod multifunction (Stop/Tail/Indicator) lamp with 0.8 metre cable coloured for LH function.	£17.65
5	P06781	Fog lamp. Rubber bodied fog lamp with 1.3 metre of cable fitted.	£9.25
	P06770/F	Fog function lens. Spare lens for the rubber fog lamp and fog function of 2 & 3 pod rear lamps.	£5.30
	P06770/I	Indicator function lens. Spare lens for the indicator function of 2 & 3 pod rear lamps.	£5.30
	P06770/T	Tail function lens. Spare lens for the stop/tail function of 2 & 3 pod rear lamps.	£5.30
6	P06770/C	Reversing lens. Spare lens for reverse function of some 3 pod rear lamps. (Not standard equipment)	£5.30
	P0711	Bulb Stop/tail. Twin filament bulb for stop/tail function.	£1.05
	P0712	Bulb Indicator. Single filament bulb for fog or indicator function.	£1.05



7	P0654	Fog lamp. Fog lamp with rear screw fixing.	£4.70
	P0707	Fog lamp lens. Spare lens for P0654.	£2.20
	P0712	Bulb.	£1.05



8	P0652/84	Position lamp. For front, rear or wing mounting, has both red and clear lenses and 2.1 metres of cable.	£6.80
9	P0705	Rear Position lens. Red.	£0.85
	P0706	Front Position lens. Clear.	£0.85
	P0659	Blanking lens. Black cap replaces one lens on wing lamp when only one function is required.	£1.75
	P0713	Bulb.	£0.70



10	P0669	Rear combination lamp. Compact multifunction (Stop/Tail/Indicator) Lamp.	£6.25
11	P0704	Combination lamp lens. For the compact multifunction lamp P0669.	£3.75
12	P06691/R	Rear combination lamp. Compact multifunction (Stop/Tail/Indicator/Rectangular reflector) Lamp cable coloured for RH function.	£10.20
13	P06691/L	Rear combination lamp. Compact multifunction (Stop/Tail/Indicator/Rectangular reflector) Lamp cable coloured for LH function.	£10.20
14	P06691LS	Combination lamp lens. Spare lens for Compact multifunction lamps P06691 type.	£4.25
15	P06783	Rear combination lamp. Rubber bodied multifunction (Stop/Tail/Indicator) lamp with 2 metre cable coloured for RH function.	£14.10
16	P06784	Rear combination lamp. Rubber bodied multifunction (Stop/Tail/Indicator) lamp with 0.8 metre cable coloured for LH function.	£14.10
17	P067831	Combination lamp lens. Spare lens for multifunction lamps P06783 and P06784.	£4.90



18	P06773	Position lamp. With integral front reflector and cable. 2.5m cable coloured for RH function.	£11.75
	P06773B	Front position lamp. With integral front reflector and cable. Fitted bracket for fixing to underside of trailer body. 2.5m cable coloured for RH function.	£14.10
	P06774	Position lamp. With integral front reflector and cable. 2.5m cable coloured for LH function.	£11.75
	P06774B	Position lamp & bracket. With integral front reflector and cable. Fitted bracket for fixing to underside of trailer body. 2.5m cable coloured for LH function.	£14.10
19	P06773/1	Clear lens. With integral reflector for front position lamps.	£5.30
	P06773/B	Mounting bracket. Bracket for fixing side and front position lamps to underside of trailer body.	£2.55
	P06782B	Side marker lamp. Amber coloured lamp with integral side reflector and cable. Fitted bracket for fixing to underside of trailer body.	£10.25
	P06782/1	Amber lens. With integral reflector for side marker lamps.	£4.85
	P0713	Bulb.	£0.70



P0738 **Coiled cable.** Pre-wired front cable assembly, connects into the front junction box on horsebox and livestock trailers. **£10.35**



P06799 **Junction box.** Hinged lid box with 10 openings and 10 connector rails each having 8 flag terminals, with wiring guide inside lid. **£11.75**

1 **P06799/2** **Grommet.** Lightly skinned over to use as a blanking grommet, can be easily pierced to accept flat or round 2 core cable. **£0.25**

2 **P06799/3** **Grommet.** Single hole, accepts 4 or 5 core round cables from lamps etc. **£0.25**

3 **P06799/4** **Grommet.** Single hole, accepts 7 core round cable or end of coiled cords. **£0.25**



4 **P0731** **7 core cable.** For wiring between junction boxes or making up lighting cables - per metre. **£0.75**

5 **P0732** **2 core cable.** Flat section cable for low wattage applications such as side marker or interior lamps - per metre. **£0.25**

P0745 **2 core cable.** Round section 2core cable black/white specifically designed for left hand side marker or tail light wiring - per metre. **£0.30**

P0746 **2 core cable.** Round section 2core cable brown/white specifically designed for right hand side marker or tail light wiring - per metre. **£0.30**

6 **P0730** **Terminal strip.** 12 Way screw connector strip for lighting repairs or extensions. **£1.35**

7 **P0727** **Scotch Lock.** **£0.25**

8 **P1023** **Cable clip.** Fits into a pre-drilled hole and accepts up to 8mm round cable, many other uses. **£0.60**

9 **F1932PK** **Cable clip.** Hammer fitted to drawbar or chassis rail, this clip can carry several cable types. Qty: 25 **£4.05**

10 **F1924PK** **Cable clip.** Cables upto Ø 12.7mm (1/2") Qty: 25 **£2.35**

F1925PK **Cable clip.** Cables upto Ø 6.4mm (1/4") Qty: 50 **£3.15**

F1926PK **Cable clip.** Cables upto Ø 7.9mm (5/6") Qty: 50 **£3.15**

11 **F1930PK** **Cable tie.** Large tie for bunching cables. Qty: 50 **£3.15**

F1929PK **Cable tie.** Medium tie for bunching cables. Qty: 25 **£1.65**

F1928PK **Cable tie.** Small tie for bunching cables. Qty: 50 **£1.50**

12 **F1921PK** **Cable clip.** Self adhesive clip for lightweight cables, has many other uses. Strip of 10 **£2.20**



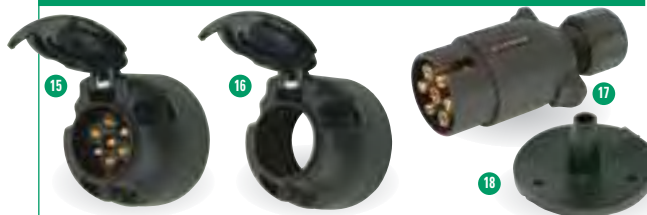
P07255 **Aqua safe plug and socket.** Waterproof plug and socket used for the interior lamp connector on DP trailers and the handset connection on tippers. **£12.35**



13 **AS8383** **Lighting cable.** Direct replacement for any trailer with removable cable. **£7.05**



14 **P1024** **Front cable clip.** Used on most models to hold the 7 core cable on the front panel when not in use. **£0.70**



15 **P0663** **Lighting socket Type 12N.** This black socket is sometimes found on the front of older trailers, or an ideal replacement for the towing vehicle (screw connections). **£1.70**

16 **B0155** **Parking Socket.** Fit to the front of any trailer to plug & protect your lighting cable when not in use. **£1.50**

17 **P0662** **Lighting plug Type 12N.** This black plug is the standard connector for the basic lighting functions (screw connections). **£1.55**

P06621 **12N Plug.** To accept 1/4" push on terminals. **£2.95**

18 **P0680** **Socket gasket.** Provides a seal behind 12N or 12S Sockets, includes tail for cable sealing. **£0.60**

B0084 **Socket cover** **£1.25**



19 **P06812** **Rear combination lamp.** Large format lamp incorporating Triangle, Stop/Tail/Indicator and Fog functions in one unit, LH version with plug in connector. **£8.50**

20 **P06811** **Rear combination lamp.** Large format lamp incorporating Triangle, Stop/Tail/Indicator and Fog functions in one unit, RH version with plug in connector. **£8.50**

P06812L **Combination lamp lens.** For the Left hand large format rear lamp used on the P6e. **£3.90**

P06811L **Combination lamp lens.** For the Right hand large format rear lamp used on the P6e. **£3.90**

21 **P06814** **Front position lamp.** Mounted on a short stalk for P6e trailers, plug in connector. **£2.50**

22 **P06813** **Numberplate lamp.** Small surface mounting numberplate lamp for P6e trailers - plug in connector. **£2.50**

P0713 **Bulb.** Single filament bulb for number plate lamps. **£0.70**

P0718 **Bulb festoon type.** Front Lamps **£1.05**

P0712 **Bulb.** Single filament bulb for fog and indicator function. **£1.05**

P0711 **Bulb Stop/tail.** Twin filament bulb for stop/tail function. **£1.05**

To Order – See pages 4 & 5 for distributor contact details or call direct on 0845 4082 505

To Order – See pages 4 & 5 for distributor contact details or call direct on 0845 4082 505



- | | | |
|----|---|--------|
| 1 | P06841 Complete lighting kit. Complete lighting set includes plug-in rear combination lamps, pre-wired loom with 7 in plug, dc cables, numberplate and front side lamps. | £41.40 |
| 2 | P07955 DC Connector (each). DoubleClick connector with two closure caps for fast and efficient fixing of single function lamps. | £0.70 |
| 3 | P07954 DC Close tool. DoubleClick hand tool applies just the correct pressure to close the counter. | £30.95 |
| 4 | P07957 DC Cable. 1 metre. (DC connector not included) | £1.00 |
| | P07958 DC Cable. 2 metre. (DC connector not included) | £1.25 |
| 5 | P07942 Front position lamp. Incorporating reflector pre-fitted to multi-positional fitting bracket. DoubleClick cable with end blanked. (As fitted to P6/7e & BV64e). | £11.75 |
| 6 | P07940L Spare lens. for above. | £3.25 |
| | P07941L Amber Lens. For side marker versions. | £4.75 |
| | P07942 Front position lamp. In tough rubber housing as used on Horsebox and many plant trailers. (For lens see P07940L) | £11.75 |
| 7 | P07951 Number plate lamp. Surface mounting (large) with bolts included. DoubleClick cable with with end blanked. | £4.80 |
| 8 | P07951L Spare lens. for above. | £3.25 |
| 9 | P07960 Outline marker lamp. Surface mounting stalk lamp RH with clear, red & amber segments. DoubleClick cable with with end blanked. | £8.15 |
| | P07961 Outline marker lamp. Surface mounting stalk lamp LH with clear, red & amber segments. DoubleClick cable with with end blanked. | £8.15 |
| | P07960L Spare lens unit. for above, all colours incorporated into single lens unit. | £4.25 |
| 10 | P07993 Number plate holder. Wide plate type with twin rubber clips. | £6.25 |
| 11 | P07994 Number plate holder. Square plate type with one rubber clip. | £6.25 |
| 12 | P07995 Number plate lamp mount. Used to fix lamp P07951 to either of the numberplate holders detailed above. | £1.20 |
| 13 | B0085 Bulb set. Contains a mix of bulbs common to Ifor Williams Trailers to suit brake, tail, indicator, numberplate and sidelamps, with leaflet guide. | £3.25 |



Representing the state of the art technology. True multifunctional lamps with large clear lens segments and the regulation reflective triangle in one package.

All the multifunction lamps on this page feature a unique 5 pin inlet connector, when matched to a harness makes connection quick and easy.




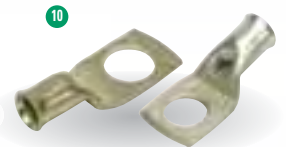
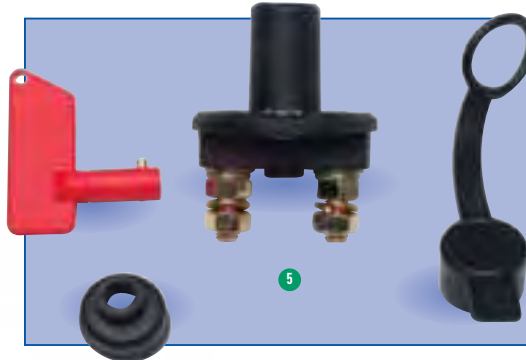
11	P07943	Combination Lamp. RH Rear combination lamp includes Rear position, Stop, Fog, indicator and all outline marker functions as well as a standard warning triangle built in. Plug in 5-pole connector.	£29.40
12	P07943L	Spare lens. for RH lamp above (does not include outline marker lens unit)	£12.65
	P07944	Combination Lamp. As above but LH function	£29.40
	P07944L	Spare lens. For LH lamp above (does not include marker lens unit)	£12.65
13	P07945	Fog lamp. Surface mounting, includes feed plug & cable for use with P07966 combination lamp.	£4.95
14	P07946	Combination Lamp. Multipoint 2RH, includes Rear position, Stop, Fog and indicator functions as well as a standard warning triangle built in. Plug in 5-pole connector.	£10.90
	P07946L	Spare lens. for above, includes loose indicator lens which can be positioned for either LH or RH.	£7.55
	P07947	Combination Lamp. Multipoint 2LH, includes Rear position, Stop, Fog and indicator functions as well as a standard warning triangle built in. Plug in 5-pole connector.	£10.90
15	P07962	Combination lamp (RH). Stop, tail, fog and indicator functions as well as a standard warning triangle built in. Wide version 175mm with 26mm deep lens section.	£10.52
	P07963	Combination lamp (LH). Stop, tail, fog and indicator functions as well as a standard warning triangle built in. Wide version 175mm with 26mm deep lens section.	£10.52
	P07990	Combination Lamp (RH). Fog and indicator functions as well as a standard warning triangle built in. Plug in 5-pole connector. (Narrow version 145mm with thin lens section).	£15.30
	P07990L	Spare lens. for RH lamp above.	£7.95
	P07991	Combination Lamp. As above but LH function.	£15.30
	P07991L	Spare lens. for LH lamp above.	£7.95
16	P07965	Combination Lamp. Rear combination lamp includes Rear position, Stop indicator functions for vertical or horizontal (either hand) mounting. Plug in 5-pole connector.	£7.05
	P07966	Combination Lamp. Rear combination lamp with additional connector to connect to separate fog lamp. (plug in 5-pole connector also feeds fog lamp.	£7.80
	P07965L	Spare lens. for combination lamp above.	£4.00
17	P07972	Wiring harness. 3.5m long cables from 7-pin plug to lamp connectors.	£18.80
	P07970	Wiring harness. 5.5m long cables from 7-pin plug to lamp connectors.	£20.55
	P07974	Wiring harness. 6.5m long cables from 7-pin plug to lamp connectors.	£27.15
18	P07964	Switched interior lamp.	£4.10
19	P07967	Rear combination. Lamp includes stop/tail, indicator & fog left or right hand - plug in connector.	£12.30
20	P07967L	Spare lens for above.	£9.30



To Order – See pages 4 & 5 for distributor contact details or call direct on 0845 4082 505

To Order – See pages 4 & 5 for distributor contact details or call direct on 0845 4082 505

	1	P0655	Battery. 102 Ah heavy duty battery	£92.00
	2	AS0087	Battery tray. TT85 - Hold the battery firmly in place on the chassis (retainer rod AS0088 also required).	£44.75
	3	AS0088	Battery retainer. For use with our battery tray AS0087 (TT85).	£13.50
	4	P0656	Terminal nuts. For our heavy duty battery P0655 (one each red / black).	£3.00
	5	P0670	Isolator switch. Supplied with one removable key.	£10.55
	6	P0670A	Isolator key. Spare key for switch above.	£4.50
	7	P0733	Battery cable (red). 16mm ² flexible heavy duty cable (per metre).	£3.20
	8	P0734	Battery cable (black). 16mm ² flexible heavy duty cable (per metre).	£3.20
	9	P1127	Connector. 2 pole electrical connector for winch or tipper applications (2 required for plug/socket connection).	£11.15
	10	P0728	Crimp terminal. For 16mm ² cables.	£2.35

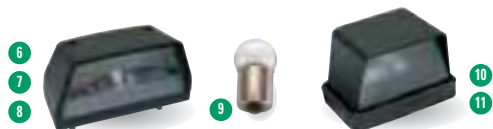


INTERIOR LAMPS



- 1 P06775 **Interior lamp.** Replacement interior lamp for horseboxes, through the panel mounting only. £8.50
- P0718 **Bulb festoon type.** Used in Horsebox and boxvan interior lamps, also P6e front and numberplate lamps. £1.05
- 2 P06790 **Interior lamp.** Waterproof lamp with integral switch and mounting bracket, ideal for use in livestock trailers. £9.80
- 3 P067902 **Lens & switch.** For P06790 interior lamp. £6.45
- 4 P0674 **Interior lamp.** Large clear lens and integral switch, ideal for box van trailers. £3.00
- 5 P0713 **Bulb.** (For items 2 & 4) £0.70

NUMBERPLATE ILLUMINATION



- 6 P0667 **Numberplate lamp.** Large surface mount numberplate lamp with 2 bolt fixing and one metre cable. £3.90
- 7 P0667C **Numberplate lamp.** Spare casing (no lens) for large numberplate lamp P0667. £1.00
- 8 P0668 **Lens.** For large numberplate lamp P0667. £0.55
- 9 P0713 **Bulb.** £0.70
- 10 P06772 **Numberplate lamp.** Surface mounting lamp complete with bulb, mounting screws and power cable. £10.55
- 11 P06772/1 **Numberplate lens.** Spare lens for P06772 numberplate lamp. £4.90

REFLECTORS

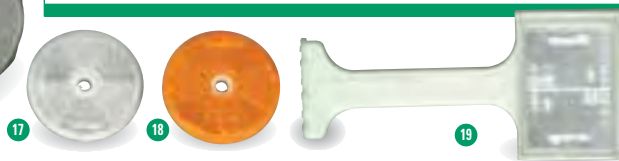


- 12 P0661 **Rear triangle.** All trailers should display a pair of these to the rear (Not to be used on cars or vans). £0.70
- 13 P0661A **Rear triangle.** On white base. £0.70
- 14 P0695 **Front reflector.** Used in pairs on trailer front, will fit thin front rails on LM type trailers. Rectangular white reflector. £0.70
- 15 P0696 **Side reflector.** Used in pairs on trailer sides, will fit thin side rails on LM type trailers. Rectangular amber reflector. £0.70
- P0697 **Rear reflector.** Used in pairs on trailer rear, will fit thin corner pillars on LM type trailers. Rectangular red reflector. £0.70

POSITION & OUTLINE MARKER LAMPS



- 20 P06785 **Front position lamp.** Fits to straight sections of roof channel on horseboxes. With integral front reflector and 1.3 metres of cable coloured for RH function. £11.75
- 21 P06786 **Front position lamp.** Fits to straight sections of roof channel on horseboxes. With integral front reflector and 1.3 metres of cable coloured for LH function. £11.75
- 22 P067851 **Front lens & reflector.** For our channel mounting front position lamps. £7.15
- 23 P067852 **Mounting base.** Two of these are required to convert lamp P06785 or P06786 (Position lamp and reflector) to surface mounting (as used on boxvan trailers). £2.30
- 24 P06787 **Front Outline marker lamp.** Mounts directly onto the curved roof channel on livestock trailers, With 5 metres of cable coloured for RH function. £8.80
- 25 P06788 **Front Outline marker lamp.** Mounts directly onto the curved roof channel on livestock trailers, With 5 metres of cable coloured for LH function. £8.80
- P06787/R **Rear Outline marker lamp.** Mounts directly onto the curved roof channel on livestock trailers, With 5 metres of cable coloured for RH function. £8.80
- P06788/R **Rear Outline marker lamp.** Mounts directly onto the curved roof channel on livestock trailers, With 5 metres of cable coloured for LH function. £8.80
- 26 P067871 **Front outline lens.** For our roof mounting outline marker lamps. £3.95
- 27 P067872 **Rear outline lens.** For our roof mounting outline marker lamps. £3.95
- 28 P067882 **Mounting base.** Two of these are required to convert lamp P06787 or P06788 (Outline marker) to flat surface mounting (as used on LM trailers). £1.90
- 29 P0713 **Bulb.** £0.70
- 30 P0653 **Front position lamp.** Round front position lamp found beneath the front panel on many older trailer models. £4.20
- P0705 **Rear position lens.** For the underbody mounting position lamp P0653. £0.85
- P0706 **Front position lens.** For the underbody mounting position lamp P0653. £0.85
- 31 P0676 **Side marker lamp.** Amber pendant lamp for fitting under side rave of trailers. £6.70
- P0718 **Bulb festoon type.** £1.05



- 16 P06905 **Front reflector.** On plastic fixing bracket, suitable for vertical or horizontal mounting (as used on P5). £1.15
- 17 P0690 **Front reflector.** Used on the flat front panels of general duty trailers. Round white reflector. £0.85
- 18 P0691 **Side reflector.** Used on the flat side panels of GD and horsebox trailers. Round amber reflector. £0.85
- 19 P0693 **Stalk reflector.** Flexible shaft for mounting at the front where the reflector is likely to hit bushes etc. £2.35

To Order – See pages 4 & 5 for distributor contact details or call direct on 0845 4082 505